

Chesterfield Hospital - Development



Public Meeting - Engineer's House, Clifton
12th December 2011



Welcome & introductions

Rowena Harris

Bristol Team

Ashley Livesey - Hospital Director

Simon Speight - Nuffield Project Manager

Steve Nicholson - Nuffield Site Manager

Simon Weston - Architect (Kendall Kingscott)

Andy Williams - Building Engineers (Aecom)

Martin Cocks - Senior Project Manager (Vinci Construction UK)

Andy Viney - Design Manager (Vinci Construction UK)



Agenda

Agenda

1. Programme Timeline

2. Pre commencement activities

a. Ecology

b. Archaeology

3. Site Layout & Operations

4. Demolition

a. Dust

5. Excavation

6. Construction

7. Environmental

a. Noise

b. Light

8. Transport

a. Car Parking, Vehicle
Movements & Routes

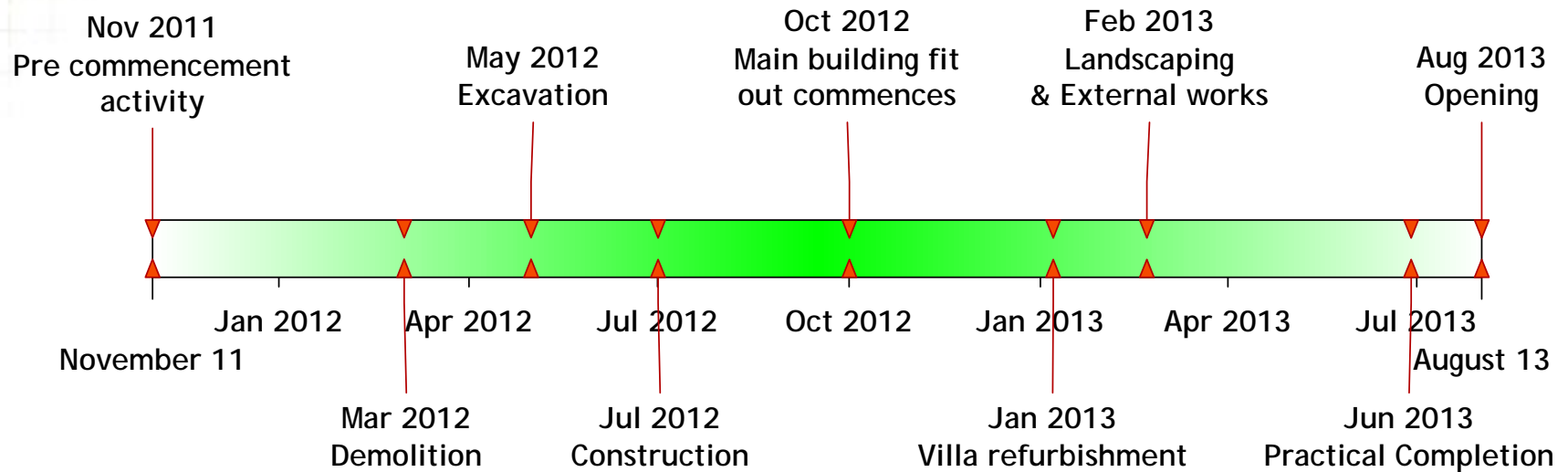
9. Communications

10. Questions

The development timeline



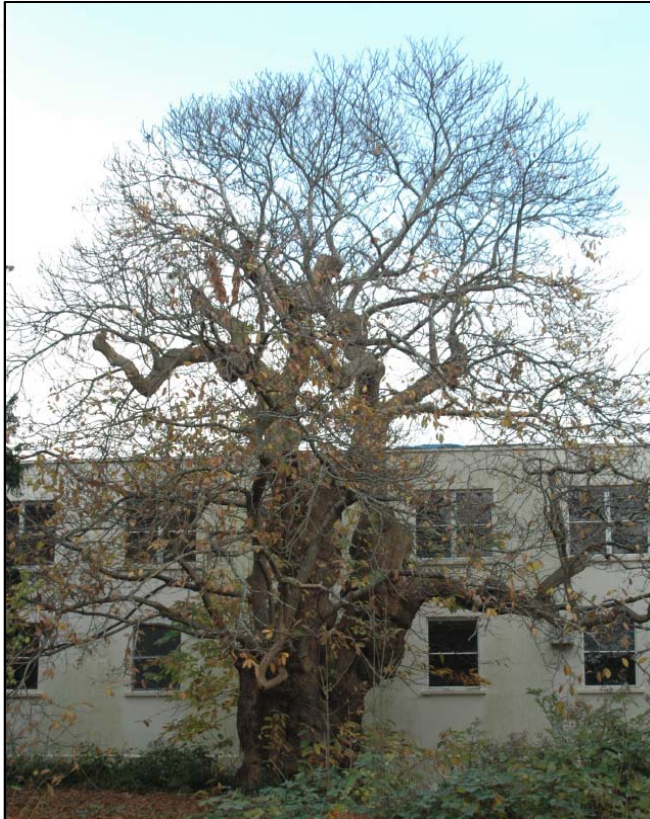
Development Timelines



Pre-commencement Activity



Ecology



Tree protection measures agreed with Bristol City Council Tree Officer - commenced, due to complete 16th Dec

“Crown Lift” work agreed for protected trees

Broom Rape strategy agreed with Bristol City Council Ecologist

Migration route only for Leislars bats. No other bats nesting or hibernating on site

No birds nesting on site

Tim Pursey - Arboricultural Consultant

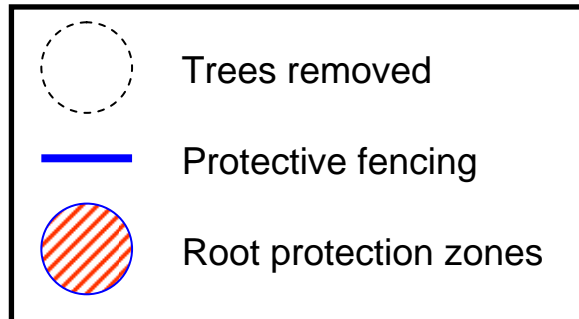
“Provided adequate protective fencing is employed along with other recommendations, the impact on the health and condition of the retained trees will be negligible during the construction period. The impact on their health and condition following development will be negligible”

Tim Pusey M.Abor.A., Dip.Arb.(RFS), Tech.Cert.(Arbor.A.)

Arboricultural Consultant

01 October 2010

Trees protection plan



Bristol And Region Archaeological Services - BARAS

BARAS now appointed to undertake all construction phase duties as set out in planning conditions regarding Archaeological surveys and recordings

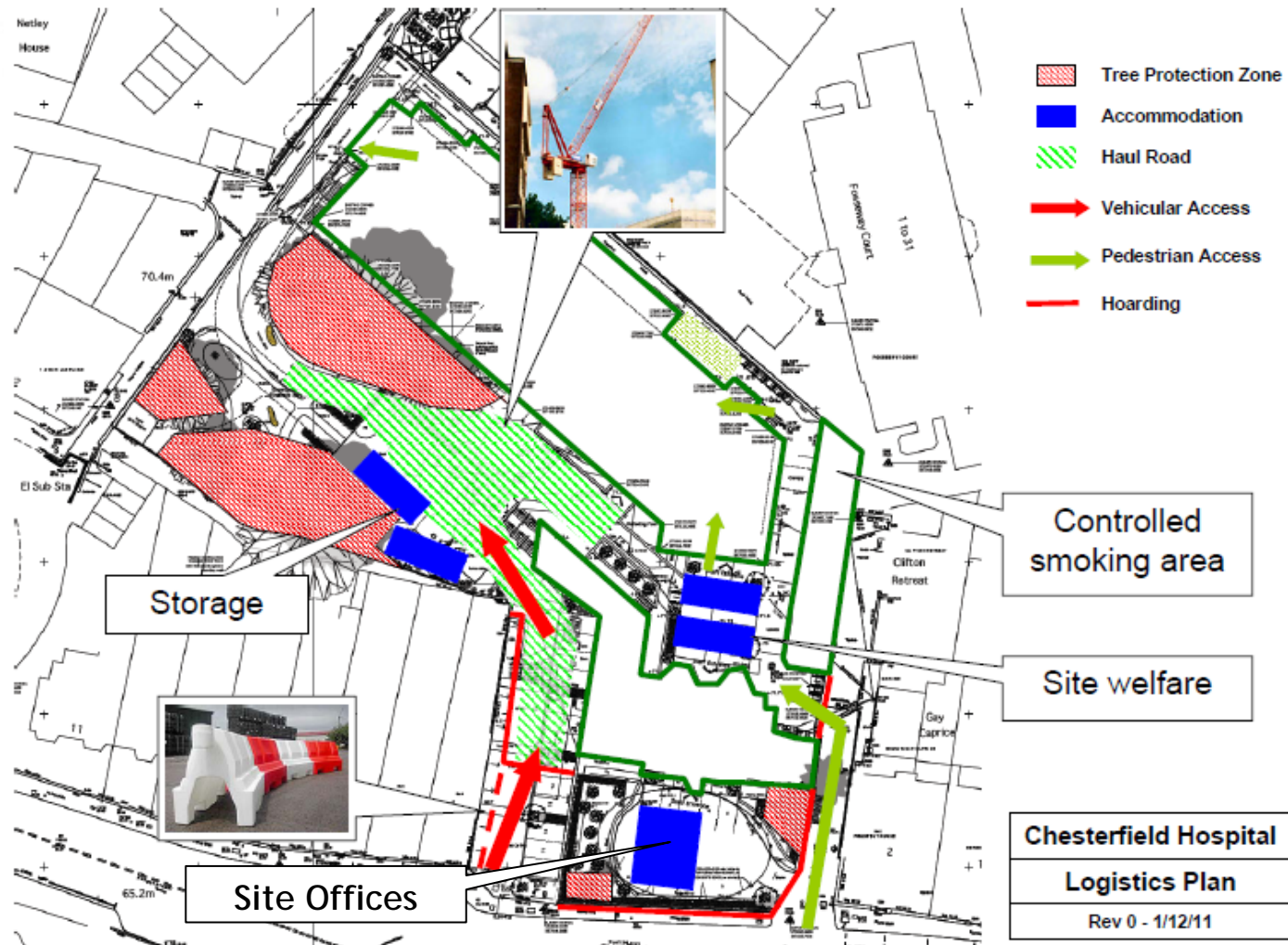
All on site recording works are now complete .

Preparation of Scheme of Investigation for construction phase is also under way.

Site set up & operation



Plan of site layout



Hours of operation

- Monday to Friday 8am - 6pm
- Saturday 8am - 1pm
- Sunday or Bank Holidays Closed

Site Rules

All operatives will have a site induction before they start work

No smoking outside site boundary - only in designated area

No parking within 200m of site, tool drop off only

No horseplay, only common courtesy and acceptable behaviour

No loud music or mobile phones

Tree protection zones & protection of ecology

Booking in deliveries and access routes to site

Use only site entrances




Proposed parking restrictions around site entrance

16

Contractor Parking


- Exclusion zone of 200m. Policed regularly
- Encourage use of local bus
- Drop off of tools at site only
- Regular visual check for vans, etc
- Space at St. Mary's for vans and minibuses

Car Share Scheme



Need a lift to site, or can you offer a lift?
Either way, fill in a card and help a colleague and the environment...

Lifts Wanted....	Lifts Offered...
<div></div>	<div></div>





Demolition, Excavation & Construction



Demolition

Water sprayed over demolition to prevent dust at source. Only real way of dealing with dust effectively

Use of hand sprayers where possible and ground level hose damping down of materials

Building demolished inwards

Demolished members will be lowered to the ground in a controlled manner and not allowed to collapse uncontrollably.

Dust monitored by supervision

Records of dust measurement kept

Re-use of crushed materials on site



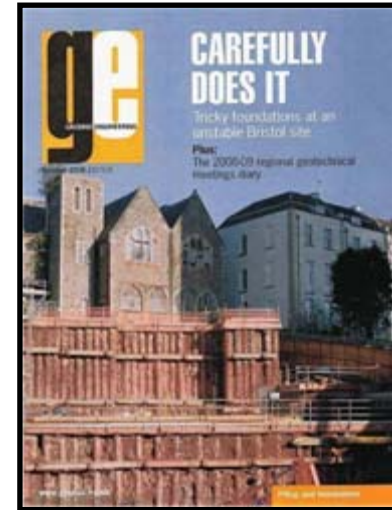
Excavation

The geological succession at this site consists of carboniferous deposits namely the Upper Cromhall Sandstone overlying softer Mudstone and strong Quartzitic Sandstone deposits at depth.

Soil & rock is able to be removed with standard excavation equipment, no need for blasting.

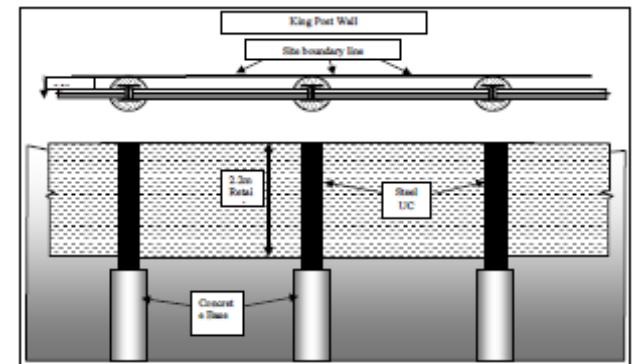


The rock at this site is competent but workable and is identical to St Catherine's House, Clifton, where Vinci's piling contractor *Foundation Piling Ltd* has been employed



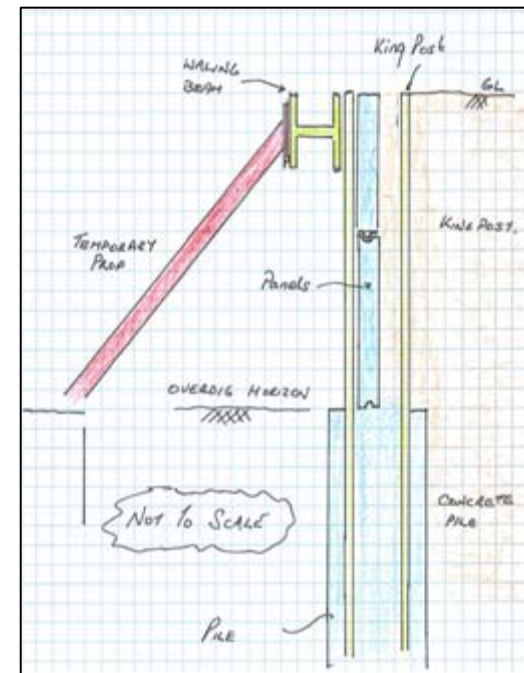
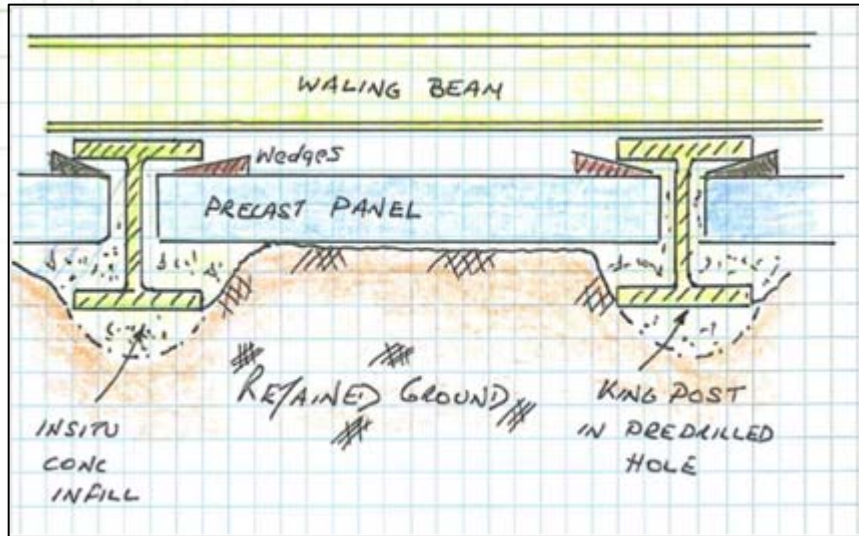
Excavation

- King Post system
- Augured (ground) not driven piles
- Less piles than conventional piled walls - less vibration, shorter piling programme
- Precast planks lowered into position as excavation precedes
- Ground fully supported with temporary props
- Wheel washing of lorries prior to leaving site



Excavation

21



We are confident that we have taken every action and sought the best advice to ensure that there is no risk of subsidence to neighbouring properties through the excavation work. The system being used by *Foundation Piling Ltd* (King posts) will mean that excavation will take less time and have significantly less piles or vibration than other methods. *Foundation Piling Ltd* has recently completed a similar project in Bristol, St Catherine's House, on similar soil strata, with no resulting subsidence.

If, at any time, you believe that subsidence has occurred in your property, please contact us immediately in order for us to investigate. In the unlikely event that subsidence occurs, you should also contact your insurer.

Construction

Concrete frame

Plasterboard internal walls

Blockwork and cladding systems

Mechanical and electrical fit out

Decoration

Specialist medical equipment

Commissioning and testing



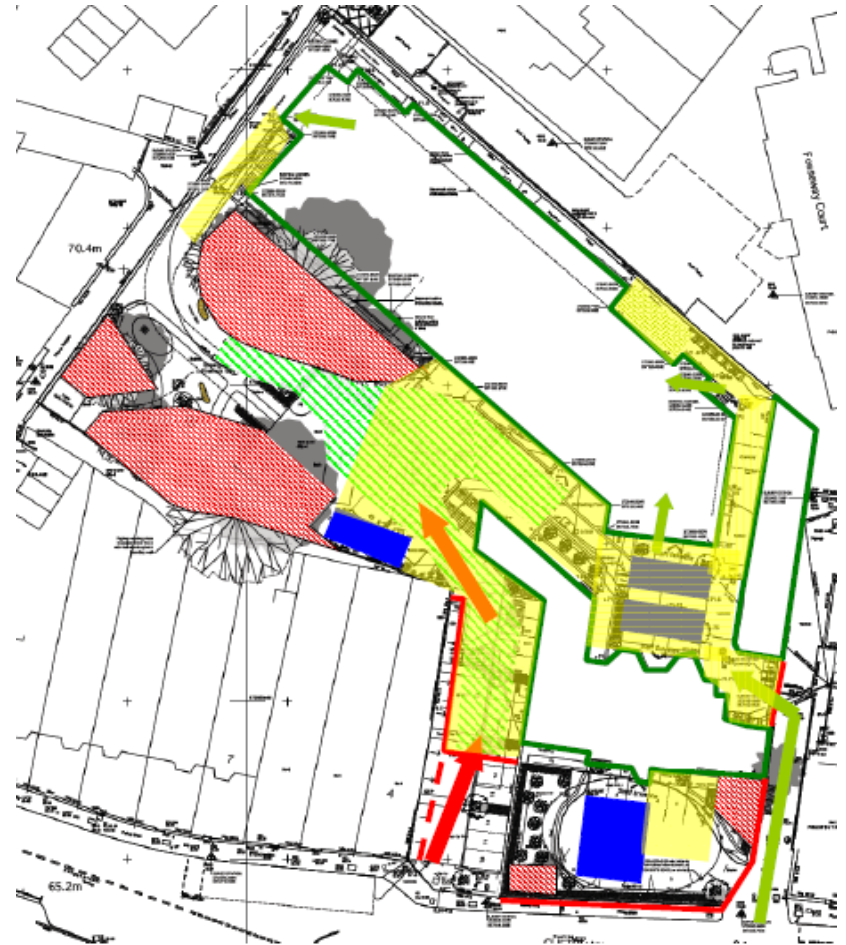
Environmental



Environmental issues

Lighting

- Lighting where needed for safety
- Turned off out of hours
- Lights at low level
- Lights on scaffold pointing inwards
- Main work inside building during the winter months
- No large spot lights



Environmental issues

Noise

- Construction plant will be carefully selected to minimise the potential for noise generation.
- Plant will be inspected and maintained at regular intervals.
- Each potential noise generating activity will be carried out with the appropriate noise reduction equipment. Baffles and silencers will be used.
- Method statements will be agreed with sub-contractors to minimise noisy activities
- Plant will be positioned away from site boundaries.
- No transistor radios will be used on site.
- A clear point of contact will be established with an action plan in place should there be any complaints.
- Regular noise monitoring will be undertaken.
- The site working hour constraints will be strictly adhered to

Environmental issues

Considerate Constructors Scheme

Subscribers to CCS since 1999

Agreed codes of conduct

Good neighbour

Respectful

Local charity involvement

Work with local schools

VCUK Regional average = 35.5/40

Industry UK average = 31.5

University of Bristol Langford Vet Surgery

“Dan Souch and his team continue to demonstrate a proactive and positive attitude towards the issues that affect the CCS Code of Conduct having introduced two highly innovative activities on the site.”

Score - 37/40

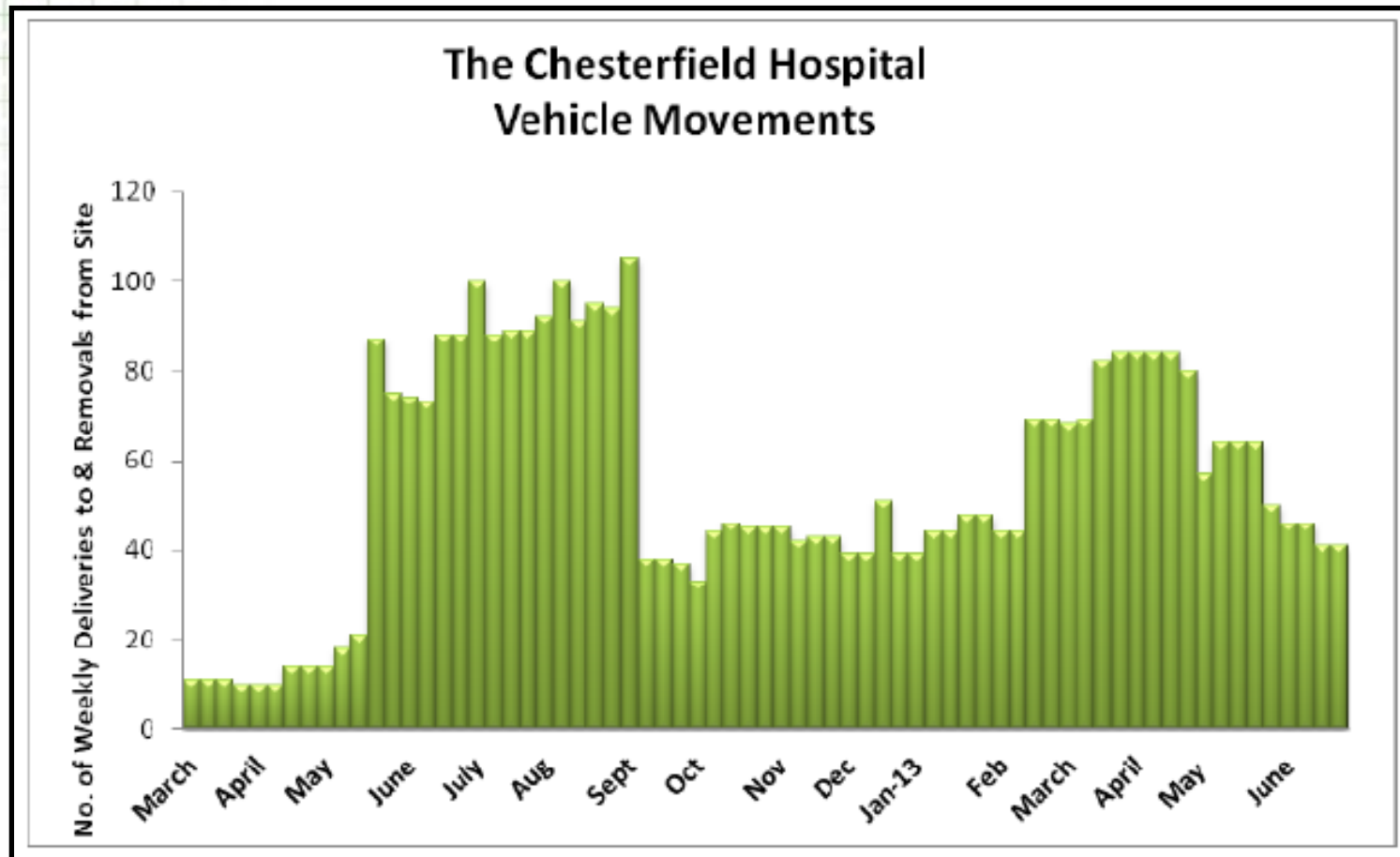
BBC Drama Village

“An exceptionally well planned site with community integration initiated as part of the design process...Excellent standards maintained with creditable commitment to further community investment initiatives and spectrum of training links being developed.”

Score - 37/40

Transportation






Average 2 vehicles per hour anticipated at peak

Proposed parking restrictions around site entrance

29


Contractor Parking

- Exclusion zone of 200m, Policed regularly
- Encourage use of local bus
- Drop off of tools at site only
- Regular visual check for vans, etc
- Space at St. Mary's to park mini buses & vans

Car Share Scheme 

Need a lift to site, or can you offer a lift?
Either way, fill in a card and help a colleague and the environment...

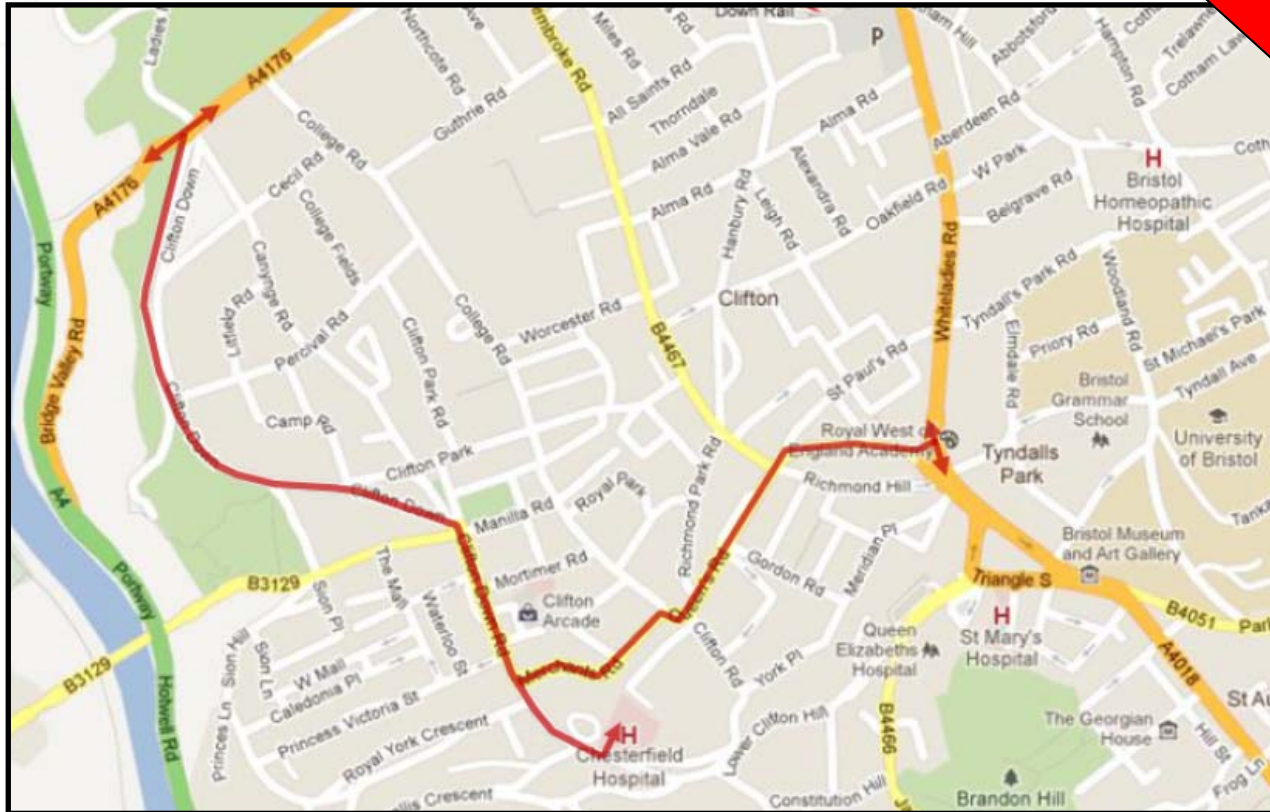
Lifts Wanted....	Lifts Offered...
<div></div>	<div></div>





Routes to Site

Routes to and from site and from site to be reviewed with Bristol City Council following Public meeting



Vehicle holding areas at Gordano & Portbury docks

Communications



Meetings & Information

Public forum -

Dec 2011, June 2012, Jan 2013

Update meetings -

Clifton & Hotwells Improvement Society, Clifton Hill Neighbours Association, Bristol City Council, Nuffield & Vinci (Monthly or 6 weekly TBC)

Nuffield/Vinci Newsletter -

Approx 6 weekly, TBC



(8am to 7pm from Monday to Friday)

Website

www.thechesterfieldhospital.com (live Jan 2012)

E mail

thechesterfieldenquiries@nuffieldhealth.com

Phone

07917 240937 or 0117 987 2727 (Hospital)



(8am to 6pm from Monday to Friday, 8am to 1pm Saturday)

Website

www.vinciconstruction.co.uk.com

E mail

chesterfield.hospital@vinciconstruction.co.uk (live Jan 2012)

Phone

To be confirmed once site manned from March 2012